



**India Meteorological Department
(Ministry of Earth Sciences)**

BULLETIN Number: 10 (BOB/03/2021)

TIME OF ISSUE: 1445 HOURS IST

DATED: 14.09.2021

FROM: INDIA METEOROLOGICAL DEPARTMENT (FAX NO. 24643965/24699216/24623220)

**TO: CONTROL ROOM, NDM, MINISTRY OF HOME AFFAIRS (FAX.NO. 23093750)
CONTROL ROOM NDMA (FAX.NO. 26701729)
CABINET SECRETARIAT (FAX.NO.23012284, 23018638)
PS TO HON'BLE MINISTER FOR S & T AND EARTH SCIENCES (FAX NO.23316745)
SECRETARY, MOES, (FAX NO. 24629777)
H.Q. (INTEGRATED DEFENCE STAFF AND CDS) (FAX NO. 23005137/23005147)
DIRECTOR GENERAL, DOORDARSHAN (23385843)
DIRECTOR GENERAL, AIR (23421105, 23421219)
PIB MOES (FAX NO. 23389042)
UNI (FAX NO. 23355841)
D.G. NATIONAL DISASTER RESPONSE FORCE (NDRF) (FAX NO. 26105912, 2436 3260)
DIRECTOR, PUNCTUALITY, INDIAN RAILWAYS (FAX NO. 23388503)
CHIEF SECRETARY, GOVT. OF ODISHA (FAX NO. 0674 -2536660)
CHIEF SECRETARY, GOVT. OF WEST BENGAL (FAX NO. 033-22144328)
CHIEF SECRETARY, ANDAMAN & NICOBAR ISLANDS (FAX NO. 03192- 232656)
CHIEF SECRETARY, ANDHRA PRADESH (FAX NO. 0863-2441029, 08645-246600)
CHIEF SECRETARY, JHARKHAND (FAX NO. 0651-2400255)
CHIEF SECRETARY, TELANGANA (FAX NO. 040-23453700)
CHIEF SECRETARY, CHATTISGARH (FAX NO 0771-2221206)
CHIEF SECRETARY, GOA (FAX NO. 0832-2415201)
CHIEF SECRETARY, MAHARASHTRA (FAX NO. FAX NO. 022- 22028594)
CHIEF SECRETARY, GUJARAT (FAX NO. 079-23250305)
CHIEF SECRETARY, MADHYA PRADESH (FAX NO. 0755-2441076)
CHIEF SECRETARY, RAJASTHAN (FAX NO. 141 2227114)
CHIEF SECRETARY, UTTAR PRADESH (FAX NO. 0522 2239283)
CHIEF SECRETARY, HARYANA (FAX NO. 0172 2740317)**

Sub: Depression over north Chhattisgarh & neighbourhood

The Depression over north Chhattisgarh & adjoining north interior Odisha moved further west-northwestwards during past 6 hours with a speed of 12 kmph, and lay centred at 1130 hrs IST of today, the 14th September, 2021, over north Chhattisgarh & neighbourhood, near latitude 22.4°N and longitude 83.0°E, about 80 km south-southwest of Ambikapur (Chhattisgarh) and about 190 km east-northeast of Raipur (Chhattisgarh).

It is very likely to weaken into a well marked low pressure area during the next 24 hours and continue to move west-northwestwards across Madhya Pradesh during the next 48 hours.

Warnings:

(i) Rainfall

- **14th September:** Light to moderate rainfall at most places: with heavy to very heavy rainfall & extremely heavy falls at isolated places likely over Chattisgarh & east Madhya Pradesh, heavy to very heavy rainfall at isolated places likely over Odisha, Gangetic West Bengal,

south Gujarat Region, Saurashtra, north Konkan, north Madhya Maharashtra and heavy rainfall at isolated places over Vidarbha, Jharkhand, east Uttar Pradesh and East Rajasthan.

- **15th September:** Light to moderate rainfall at most places: with heavy to very heavy & extremely heavy falls at isolated places very likely over Gujarat State & Madhya Pradesh; heavy to very heavy rainfall at isolated places over north Konkan and heavy rainfall at isolated places over Chhattisgarh, east Uttar Pradesh and East Rajasthan.
- **16th September:** Light to moderate rainfall at most places: with heavy to very heavy rainfall at isolated places very likely over Gujarat State, east Rajasthan and west Madhya Pradesh, and heavy rainfall at isolated places very likely over east Uttar Pradesh, Haryana, Chandigarh & Delhi, east Madhya Pradesh, east Rajasthan and north Konkan.

(ii) EXPECTED IMPACT & ACTION SUGGESTED: Due to very Heavy/Extremely heavy Rainfall over Gujarat state, Chhattisgarh, Madhya Pradesh, Odisha, West Bengal & east Rajasthan.

A. Impact Expected

- Localized Flooding of roads, inundation and water logging in low lying areas and closure of underpasses mainly in urban areas of the above region.
- Occasional reduction in visibility due to heavy rainfall.
- Disruption of traffic in major cities due to water logging in roads leading to increased travel time.
- Minor damage to kutch roads. Possibilities of damage to vulnerable structure.
- Localized Landslides/Mudslides
- Damage to horticulture and standing crops in some areas due to inundation and strong winds.
- It may lead to riverine flooding in some river catchments (for riverine flooding please visit Web page of Central Water Commission)

B. Action Suggested

- Check for traffic congestion on your route before leaving for your destination.
- Follow any traffic advisories that are issued in this regard.
- Avoid going to areas that face the water logging problems often.
- Avoid staying in vulnerable structure.
- Follow IMD warnings for updates

Realised rainfall

Accumulated realised rainfall over Odisha, Chattisgarh and Gujarat (**cm**) during past 24 hours (0830 hours IST of 13th to 0830 hours IST of 14th Sep., 2021) is given in **Annexure**.

The next bulletin will be issued at 2030 hrs IST of 14th September, 2021.

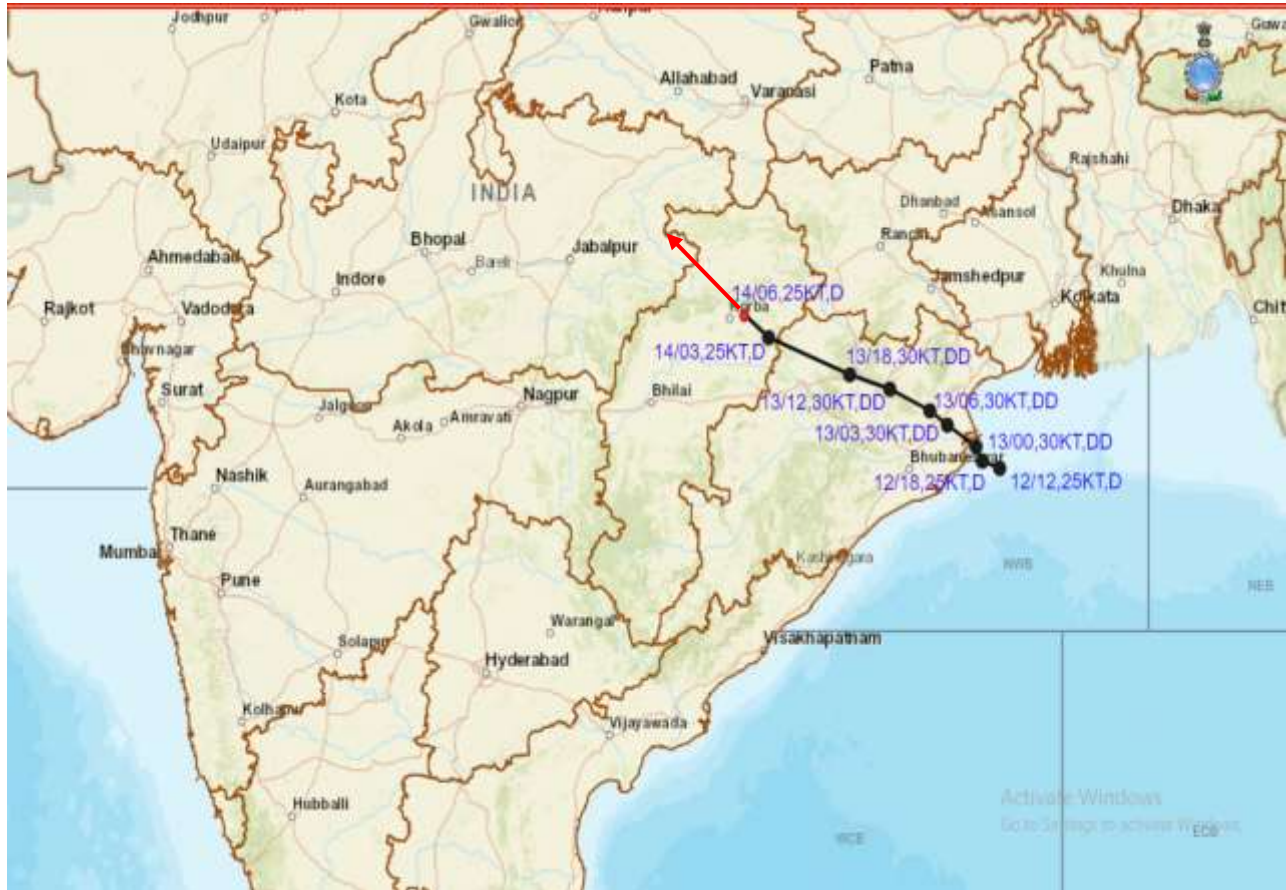
(Sunitha Devi)
Scientist-F, RSMC, New Delhi

Copy to: ACWC Kolkata/ Chennai/Mumbai CWC Bhubaneswar/CWC Visakhapatnam/CWC Ahmedabad/ MC Ranchi/MC Hyderabad/MC Raipur/MC Goa/MC Bhopal

LEGEND: Heavy Rainfall: 64.5 to 115.5mm, Very Heavy Rainfall: 115.6 to 204.4mm, Extremely Heavy Rainfall: 204.5mm or more. Many Places: 51% to 75% of the stations, Most Places: more than 76% of total stations, Isolated Places: Less than 25% of total stations
--



OBSERVED AND FORECAST TRACK OF DEPRESSION OVER NORTH CHHATTISGARH & NEIGHBOURHOOD BASED ON 0600 UTC OF 14TH SEPTEMBER, 2021



DATE/TIME IN UTC
IST=UTC + 0530
L: LOW PRESSURE AREA
WML: WELL MARKED LOW PRESSURE AREA
D: DEPRESSION (17-27 KT)
DD: DEEP DEPRESSION (28-33 KT)
CS: CYCLONIC STORM (34-47 KT)
SCS: SEVERE CYCLONIC STORM (48-63KT)
VSCS: VERY SEVERE CYCLONIC STORM (64-89 KT)
ESCS: EXTREMELY SEVERE CYCLONIC STORM (90-119 KT)
SuCS: SUPER CYCLONIC STORM (≥20 KT)

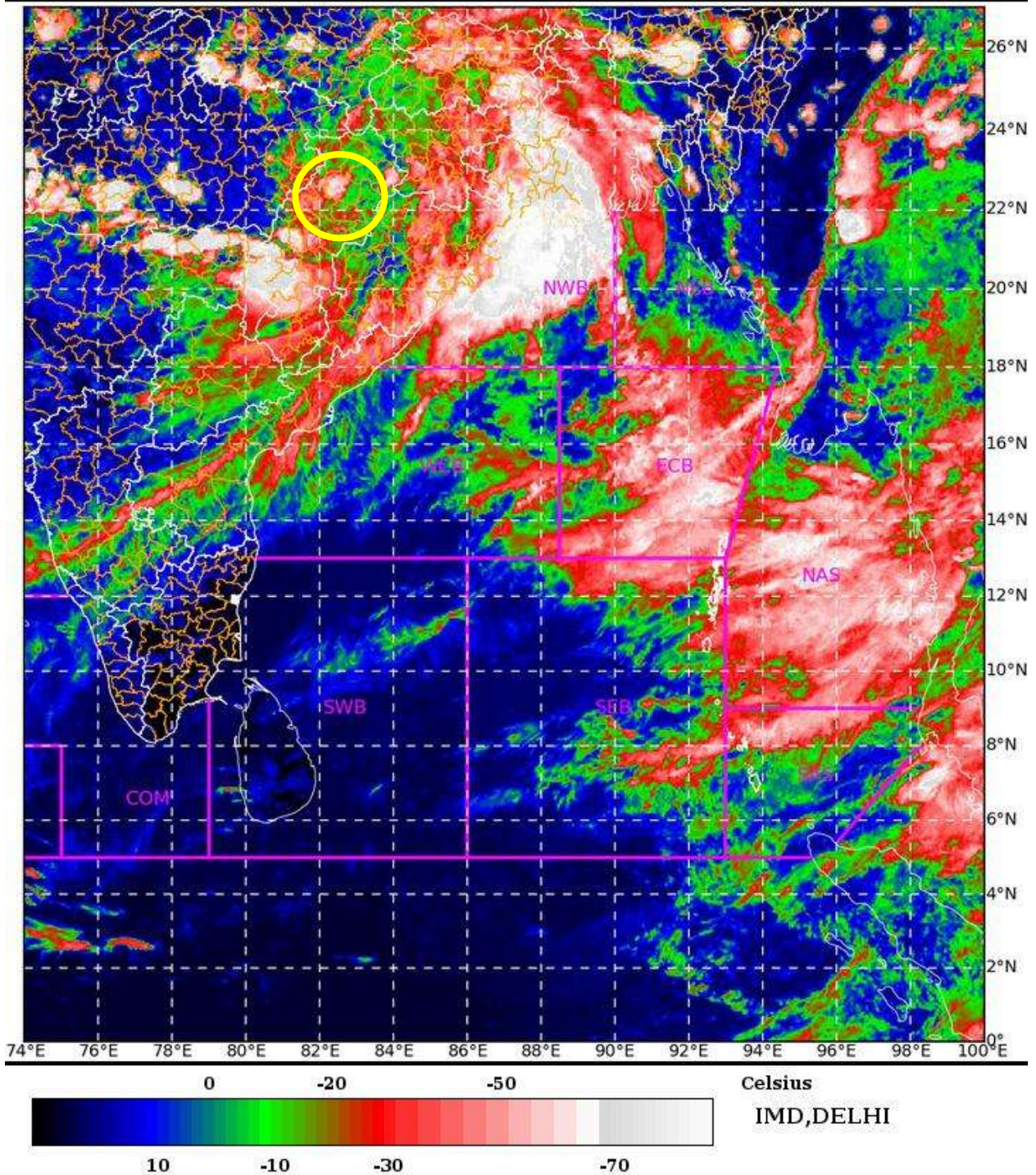
- LESS THAN 34 KT
- 34-47 KT
- ≥ 48 KT
- OBSERVED TRACK
- FORECAST TRACK
- CONE OF UNCERTAINTY

SAT : INSAT-3DR IMG 14-09-2021/(0815 to 0842) GMT

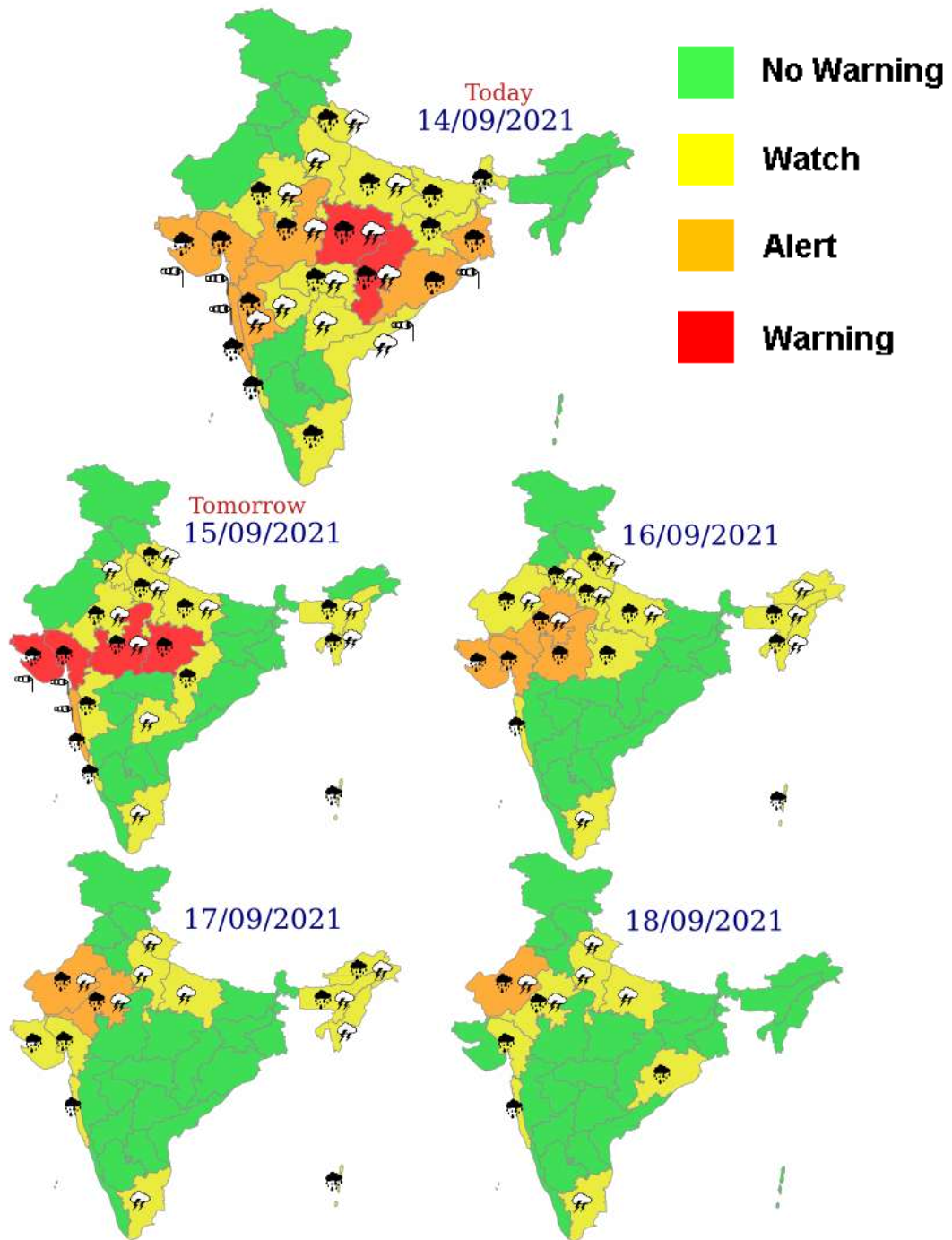
IMG_TIR1_TEMP 10.8 um 14-09-2021/(1345 to 1412) IST

L1C Mercator

DEPRESSION 22.4N/83.0E



Meteorological Sub-division level heavy rainfall warning



Accumulated realised rainfall over Odisha, Chattisgarh and Gujarat (cm) during past 24 hours (0830 hours IST of 13th to 0830 hours IST of 14th Sep., 2021)

Odisha

Talcher - 39, Birmaharajpur - 37, Tikarpara - 35, Sonapur - 28, Boudhgarh - 26, Patnagarh & Banarpal - 25 each, Bolangir, Hindol & Paikmal - 24 each, Kantamal & Parjang - 23 each, Barmul & Belpada - 22 each, Bari, Jenapur, Phiringia, Gaisilet & Mahanga – 21 each, Angul, Nawapara, Kamakhyanagar, Tarva & Athmalik – 20 each, Altuma, Harabhanga, Banki, Gania & Narsinghpur – 19 each, Rajkishorenagar, Phulbani, Kankadahad & Agalpur-18 each, Jharbandh, Binjharpur, Bhuban & Dhenkanal -17 each, Daitari, Athgarh, Khairamal, Rajghat, Chandikhol, Khaprakhol, Padampur – 16 each, Ullunda & Salebhatta – 15 each, Sukinda, Danagadi & Tikabali 14 each, Balasore, Telkoi, Komna, Tigiria, Salepur & Naraj – 13 each, Dunguripalli, Daspalla & Cuttack-12 each, Jaleswar, Korei, Loisingha, Jajpur & Rairakhol -11 each, Rengali, Turekela & Saintala - 10 each, Barpalli, Madanpur Rampur, Jagannath Prasad, Karlamunda, Harichandanpur, Burla, Baliguda, Chendipada, Kaniha, Atabira , K Nuagaon & Kotagarh - 9 each, Chandbali, Bhadrak, Akhuapada, Nh5 Gobindpur, Kalinga, Pallahara, Kujanga, Rajkanika, Raikia, G Udayagiri, Bargarh, Similiguda , Daringibadi, Bonth, Batli, Mundali, Dhamnagar & Jujumura - 8 each and Bhograi, Nawana, Anandpur, Belaguntha, Khandapara, Bijepur, Niali, Kaptipada, Narla, Bhanjnagar, Nischintakoili, Belgaon & Betanati – 7 each.

Gujarat Region:

Kaprada -19, Dharampur - 17, Waghai - 14, Valsad - 13, Valsadkvwaks - 12, Dholera , Umergam & Dangs – 11 each, Vansda - 10, Quant, Uchchhal & Khergam – 9 each, Surat City, Subir, Daman_arg & Chhota Udepur - 8, Mangrol, Pardi & Surat – 7 each.

Saurashtra & Kutch:

Lodhika - 52, Visavadar - 47, Kalavad - 41, Dhoraji -25, Targhadia - 24, Junagadh & Kotdasangani - 21 each, Rajkot , Junagarh & Keshod - 20, Gondal & Jamkandorna – 19 each, Paddhari - 18, Ranavav -16, Talala & Mendarda – 15 each, Porbandar - 14, Malia - 13, Vanthali, Jamnagar, Jamjodhpur & Upleta – 12 each, Dhrol, Manavadar, Vadia & Bhesan – 11 each, Lalpur, Kutiana, Bhanvad & Kalyanpur – 10 each, Jetpur, Tankara & Jamnagarkvwaks – 9 each, Una, Veraval & Diu (dist Diu) - 8 each, Gir Gadhada & Dwarka 7 each.

Chhattisgarh:

Gariabund-20, Basana-19, Magarlod, Bagbahara & Chhura-14 each, Kurud-13, Rajim, Mahasamund & Saraipali-11 each, Raipur & Labhandih-10 each, Patan-9, Arang & Mana-raipur, Kartala & Abhanpur 8 each, Sakti, Bilaigarh, Saja & Gandai-7 each
